

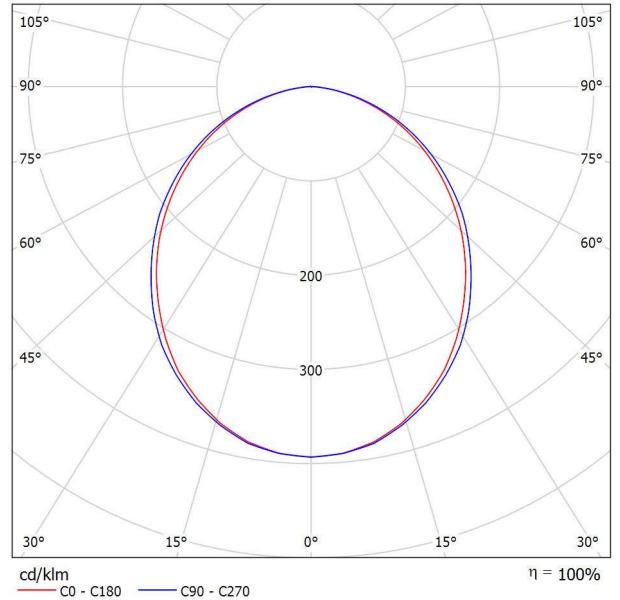


Operator
Telephone
Fax
e-Mail

VYRTYCH a.s. VIF-03-2015-G GRIFON-LED-7860-4K / Luminaire Data Sheet

Luminous emittance 1:

See our luminaire catalog for an image of the luminaire.



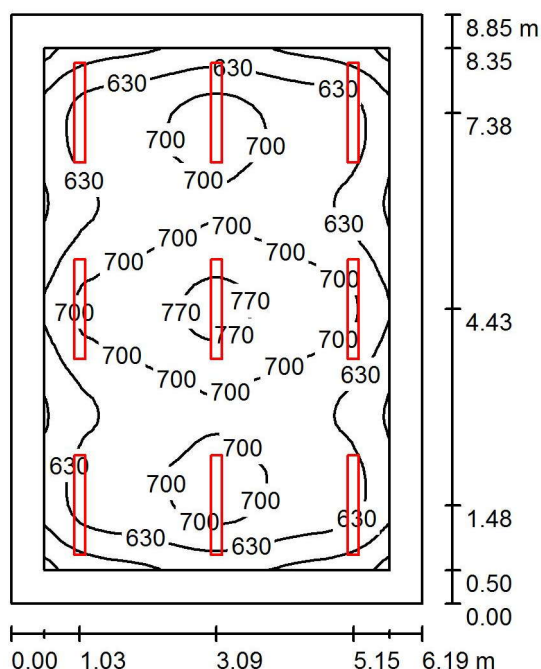
Luminaire classification according to CIE: 100
CIE flux code: 50 81 96 100 100

Luminous emittance 1:

Glare Evaluation According to UGR											
ρ Ceiling	70	70	50	50	30	70	70	50	50	30	
ρ Walls	50	30	50	30	30	50	30	50	30	30	
ρ Floor	20	20	20	20	20	20	20	20	20	20	
Room Size X Y	Viewing direction at right angles to lamp axis					Viewing direction parallel to lamp axis					
2H	2H	19.1	20.4	19.4	20.7	20.9	19.4	20.7	19.7	21.0	21.2
	3H	20.8	21.9	21.1	22.2	22.5	21.1	22.3	21.4	22.6	22.8
	4H	21.3	22.4	21.7	22.7	23.0	21.7	22.8	22.0	23.1	23.4
	6H	21.7	22.7	22.1	23.0	23.3	22.1	23.1	22.4	23.4	23.7
	8H	21.8	22.8	22.2	23.1	23.4	22.2	23.2	22.5	23.5	23.8
4H	2H	19.7	20.8	20.1	21.1	21.4	20.0	21.1	20.3	21.3	21.6
	3H	21.6	22.5	21.9	22.8	23.1	21.8	22.8	22.2	23.1	23.4
	4H	22.3	23.1	22.6	23.4	23.8	22.6	23.4	23.0	23.7	24.1
	6H	22.7	23.4	23.1	23.8	24.2	23.1	23.8	23.5	24.2	24.5
	8H	22.9	23.5	23.3	23.9	24.3	23.2	23.9	23.6	24.2	24.7
8H	4H	22.5	23.2	23.0	23.6	24.0	22.8	23.5	23.2	23.9	24.3
	6H	23.1	23.6	23.6	24.1	24.5	23.4	23.9	23.9	24.4	24.8
	8H	23.3	23.8	23.8	24.2	24.7	23.6	24.1	24.1	24.5	25.0
	12H	23.4	23.8	23.9	24.3	24.8	23.7	24.1	24.2	24.6	25.1
	12H	4H	22.5	23.1	23.0	23.5	24.0	22.8	23.4	23.3	23.8
6H		23.2	23.6	23.6	24.1	24.5	23.4	23.9	23.9	24.4	24.8
8H		23.4	23.8	23.9	24.2	24.7	23.7	24.1	24.2	24.5	25.0
Variation of the observer position for the luminaire distances S											
S = 1.0H	+0.1 / -0.1					+0.1 / -0.1					
S = 1.5H	+0.2 / -0.4					+0.2 / -0.4					
S = 2.0H	+0.5 / -0.8					+0.5 / -0.7					
Standard table	BK05					BK05					
Correction Summand	-0.0					0.2					
Corrected Glare Indices referring to 5691lm Total Luminous Flux											

Operator
Telephone
Fax
e-Mail

Učebňa / Summary



Height of Room: 3.000 m, Mounting Height: 3.000 m, Maintenance factor: 0.80

Values in Lux, Scale 1:114

Surface	ρ [%]	E_{av} [lx]	E_{min} [lx]	E_{max} [lx]	u_0
Workplane	/	663	468	793	0.707
Floor	20	545	329	679	0.605
Ceiling	70	135	100	160	0.740
Walls (4)	50	325	123	515	/

Workplane:

Height: 0.750 m
Grid: 64 x 64 Points
Boundary Zone: 0.500 m

UGR

Left Wall 22
Lower Wall 23
(CIE, SHR = 1.00.)

Lengthways-

22
23

Across

23
23

to luminaire axis

Illuminance Quotient (according to LG7): Walls / Working Plane: 0.511, Ceiling / Working Plane: 0.204.
Proportion of points with less than 400 lx (for IEQ-7): 0.00%.

Luminaire Parts List

No.	Pieces	Designation (Correction Factor)	Φ (Luminaire) [lm]	Φ (Lamps) [lm]	P [W]
1	9	VYRTYCH a.s. VIF-03-2015-G GRIFON-LED-7860-4K (1.000)	5694	5691	57.0
			Total: 51244	Total: 51219	513.0

Specific connected load: $9.36 \text{ W/m}^2 = 1.41 \text{ W/m}^2/100 \text{ lx}$ (Ground area: 54.78 m^2)

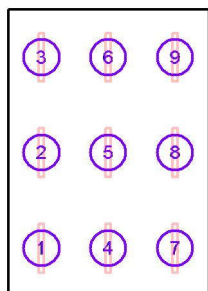


Operator
Telephone
Fax
e-Mail

Učebňa / Luminaires (coordinates list)

VYRTYCH a.s. VIF-03-2015-G GRIFON-LED-7860-4K

5694 lm, 57.0 W, 1 x 5 x LED (Correction Factor 1.000).



No.	Position [m]			Rotation [°]		
	X	Y	Z	X	Y	Z
1	1.030	1.480	3.000	0.0	0.0	0.0
2	1.030	4.430	3.000	0.0	0.0	0.0
3	1.030	7.380	3.000	0.0	0.0	0.0
4	3.090	1.480	3.000	0.0	0.0	0.0
5	3.090	4.430	3.000	0.0	0.0	0.0
6	3.090	7.380	3.000	0.0	0.0	0.0
7	5.150	1.480	3.000	0.0	0.0	0.0
8	5.150	4.430	3.000	0.0	0.0	0.0
9	5.150	7.380	3.000	0.0	0.0	0.0

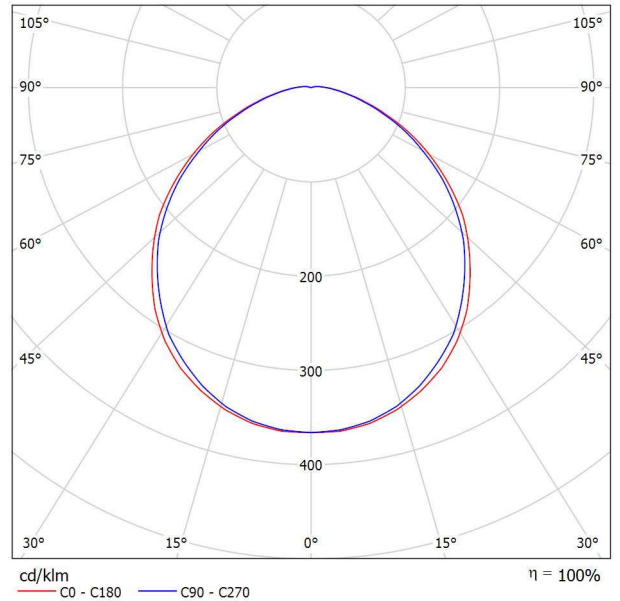


Operator
Telephone
Fax
e-Mail

VYRTYCH a.s. CORSO-LED-13-840-350, 13W Interiérové - prisazené nebo nástěnné, zdroj LED / Luminaire Data Sheet

Luminous emittance 1:

See our luminaire catalog for an image of the luminaire.



Luminaire classification according to CIE: 99
 CIE flux code: 49 80 95 99 100

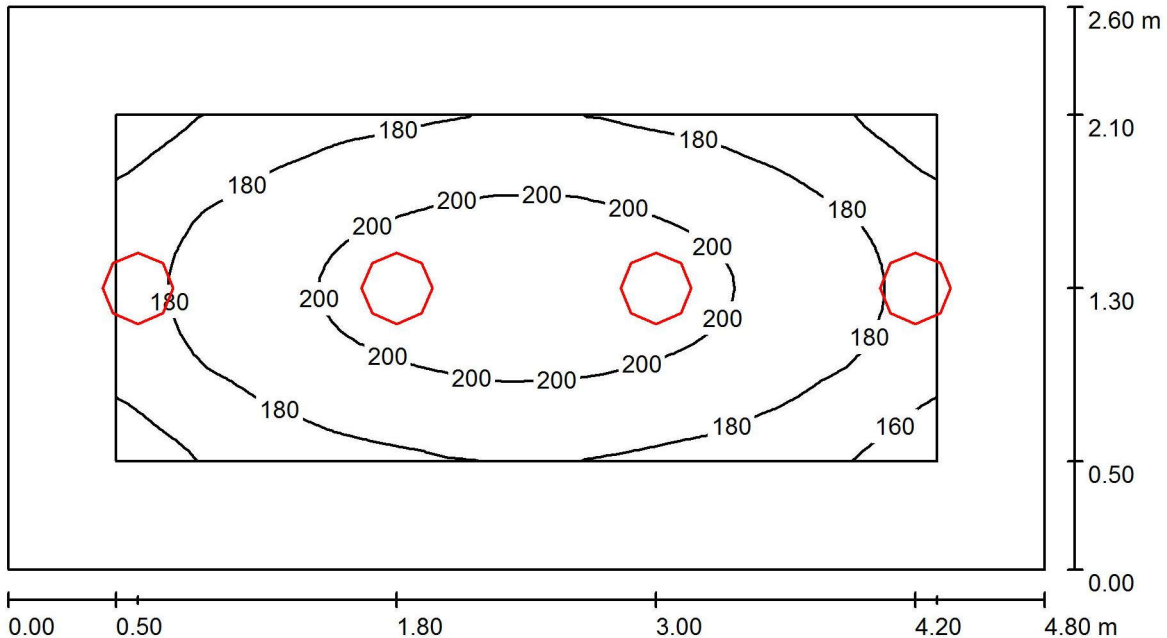
Luminous emittance 1:

Glare Evaluation According to UGR											
		70	70	50	50	30	70	70	50	50	30
p Ceiling											
p Walls		50	30	50	30	30	50	30	50	30	30
p Floor		20	20	20	20	20	20	20	20	20	20
Room Size	Viewing direction at right angles to lamp axis	Viewing direction parallel to lamp axis									
X	Y										
2H	2H	18.8	20.1	19.1	20.4	20.6	18.6	19.9	18.9	20.2	20.4
	3H	20.4	21.6	20.8	21.9	22.2	20.2	21.4	20.5	21.6	21.9
	4H	21.0	22.1	21.4	22.4	22.7	20.8	21.9	21.1	22.2	22.5
	6H	21.5	22.6	21.9	22.9	23.2	21.3	22.3	21.7	22.6	23.0
	8H	21.8	22.7	22.2	23.1	23.4	21.5	22.5	21.9	22.8	23.2
4H	12H	22.0	22.9	22.4	23.3	23.7	21.7	22.7	22.1	23.0	23.4
	2H	19.3	20.4	19.6	20.7	21.0	19.1	20.2	19.5	20.5	20.8
	3H	21.1	22.0	21.5	22.4	22.7	20.9	21.8	21.3	22.2	22.5
	4H	21.8	22.7	22.3	23.0	23.4	21.6	22.5	22.0	22.8	23.2
	6H	22.5	23.2	22.9	23.6	24.1	22.3	23.0	22.7	23.4	23.8
8H	8H	22.8	23.5	23.3	23.9	24.3	22.6	23.2	23.0	23.7	24.1
	12H	23.1	23.7	23.6	24.2	24.6	22.9	23.5	23.4	23.9	24.4
	4H	22.1	22.8	22.5	23.2	23.6	21.9	22.6	22.4	23.0	23.4
	6H	22.9	23.5	23.4	23.9	24.4	22.7	23.3	23.2	23.7	24.2
	8H	23.3	23.8	23.8	24.3	24.8	23.1	23.6	23.6	24.1	24.6
12H	12H	23.8	24.2	24.3	24.7	25.3	23.6	24.0	24.1	24.5	25.0
	4H	22.1	22.7	22.6	23.2	23.6	21.9	22.5	22.4	23.0	23.4
	6H	23.0	23.5	23.5	24.0	24.5	22.8	23.3	23.3	23.8	24.3
	8H	23.5	23.9	24.0	24.4	24.9	23.3	23.7	23.8	24.2	24.7
	Variation of the observer position for the luminaire distances S										
S = 1.0H		+0.1 / -0.1					+0.1 / -0.1				
S = 1.5H		+0.2 / -0.4					+0.2 / -0.4				
S = 2.0H		+0.4 / -0.7					+0.4 / -0.7				
Standard table		BK06					BK06				
Correction Summand		6.0					5.7				
Corrected Glare Indices referring to 1130lm Total Luminous Flux											



Operator
Telephone
Fax
e-Mail

WC / Summary



Height of Room: 3.000 m, Mounting Height: 3.000 m, Maintenance factor: 0.80

Values in Lux, Scale 1:35

Surface	ρ [%]	E_{av} [lx]	E_{min} [lx]	E_{max} [lx]	u0
Workplane	/	186	149	210	0.798
Floor	20	127	90	154	0.711
Ceiling	70	47	33	73	0.700
Walls (4)	50	97	45	302	/

Workplane:

Height: 0.750 m
Grid: 64 x 32 Points
Boundary Zone: 0.500 m

Illuminance Quotient (according to LG7): Walls / Working Plane: 0.570, Ceiling / Working Plane: 0.254.
Proportion of points with less than 400 lx (for IEQ-7): 100.00%.

Luminaire Parts List

No.	Pieces	Designation (Correction Factor)	Φ (Luminaire) [lm]	Φ (Lamps) [lm]	P [W]
1	4	VYRTYCH a.s. CORSO-LED-13-840-350, 13W Interiérové - přisazené nebo nástěnné, zdroj LED (Type 1)* (1.000)	1130	1130	23.0
*Modified Technical Specifications			Total: 4521	Total: 4520	92.0

Specific connected load: $7.37 \text{ W/m}^2 = 3.95 \text{ W/m}^2/100 \text{ lx}$ (Ground area: 12.48 m^2)

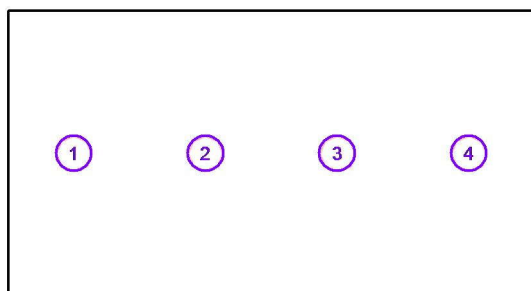


Operator
Telephone
Fax
e-Mail

WC / Luminaires (coordinates list)

VYRTYCH a.s. CORSO-LED-13-840-350, 13W Interiérové - přisazené nebo nástěnné, zdroj LED (Type 1)

1130 lm, 23.0 W, 1 x 1 x User defined (Correction Factor 1.000).



No.	Position [m]			Rotation [°]		
	X	Y	Z	X	Y	Z
1	0.600	1.300	3.000	0.0	0.0	0.0
2	1.800	1.300	3.000	0.0	0.0	0.0
3	3.000	1.300	3.000	0.0	0.0	0.0
4	4.200	1.300	3.000	0.0	0.0	0.0

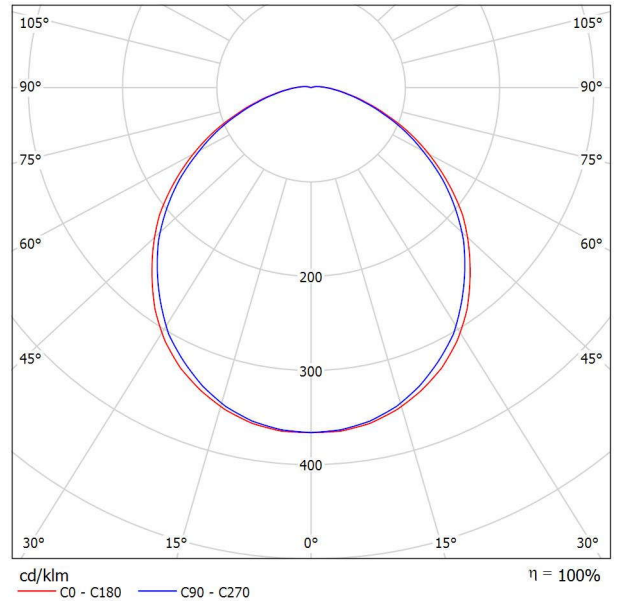


Operator
Telephone
Fax
e-Mail

VYRTYCH a.s. CORSO-LED-13-840-350, 13W Interiérové - prisazené nebo nástěnné, zdroj LED / Luminaire Data Sheet

Luminous emittance 1:

See our luminaire catalog for an image of the luminaire.



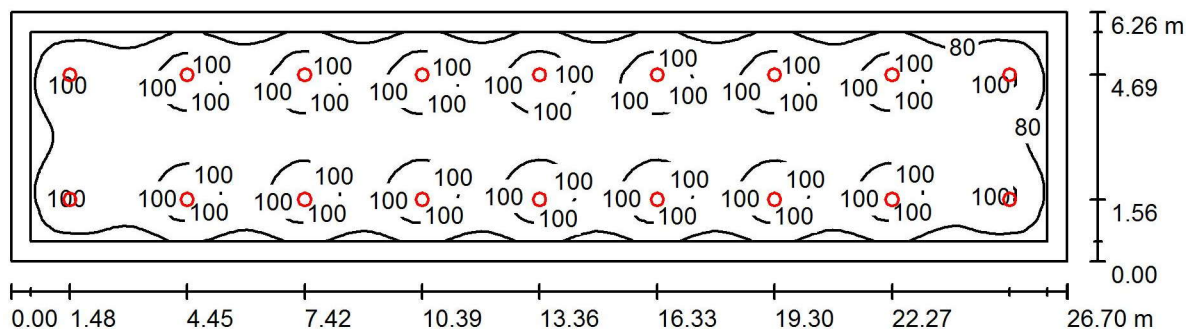
Luminaire classification according to CIE: 99
 CIE flux code: 49 80 95 99 100

Luminous emittance 1:

Glare Evaluation According to UGR											
p Ceiling		70	70	50	50	30	70	70	50	50	30
p Walls		50	30	50	30	30	50	30	50	30	30
p Floor		20	20	20	20	20	20	20	20	20	20
Room Size X Y		Viewing direction at right angles to lamp axis					Viewing direction parallel to lamp axis				
2H	2H	18.8	20.1	19.1	20.4	20.6	18.6	19.9	18.9	20.2	20.4
	3H	20.4	21.6	20.8	21.9	22.2	20.2	21.4	20.5	21.6	21.9
	4H	21.0	22.1	21.4	22.4	22.7	20.8	21.9	21.1	22.2	22.5
	6H	21.5	22.6	21.9	22.9	23.2	21.3	22.3	21.7	22.6	23.0
4H	2H	19.3	20.4	19.6	20.7	21.0	19.1	20.2	19.5	20.5	20.8
	3H	21.1	22.0	21.5	22.4	22.7	20.9	21.8	21.3	22.2	22.5
	4H	21.8	22.7	22.3	23.0	23.4	21.6	22.5	22.0	22.8	23.2
	6H	22.5	23.2	22.9	23.6	24.1	22.3	23.0	22.7	23.4	23.8
8H	2H	22.8	23.5	23.3	23.9	24.3	22.6	23.2	23.0	23.7	24.1
	3H	23.1	23.7	23.6	24.2	24.6	22.9	23.5	23.4	23.9	24.4
	4H	22.1	22.8	22.5	23.2	23.6	21.9	22.6	22.4	23.0	23.4
	6H	22.9	23.5	23.4	23.9	24.4	22.7	23.3	23.2	23.7	24.2
12H	2H	23.3	23.8	23.8	24.3	24.8	23.1	23.6	23.6	24.1	24.6
	3H	23.8	24.2	24.3	24.7	25.3	23.6	24.0	24.1	24.5	25.0
	4H	22.1	22.7	22.6	23.2	23.6	21.9	22.5	22.4	23.0	23.4
	6H	23.0	23.5	23.5	24.0	24.5	22.8	23.3	23.3	23.8	24.3
		23.5	23.9	24.0	24.4	24.9	23.3	23.7	23.8	24.2	24.7
Variation of the observer position for the luminaire distances S											
S = 1.0H		+0.1 / -0.1					+0.1 / -0.1				
S = 1.5H		+0.2 / -0.4					+0.2 / -0.4				
S = 2.0H		+0.4 / -0.7					+0.4 / -0.7				
Standard table		BK06					BK06				
Correction Summand		6.0					5.7				
Corrected Glare Indices referring to 1130lm Total Luminous Flux											

Operator
Telephone
Fax
e-Mail

Chodba - Átrium / Summary



Height of Room: 3.000 m, Mounting Height: 3.000 m, Maintenance factor: 0.80

Values in Lux, Scale 1:191

Surface	ρ [%]	E_{av} [lx]	E_{min} [lx]	E_{max} [lx]	u_0
Workplane	/	93	62	113	0.667
Floor	20	80	46	93	0.568
Ceiling	70	20	16	32	0.829
Walls (4)	50	46	23	65	/

Workplane:

Height: 0.750 m
Grid: 128 x 64 Points
Boundary Zone: 0.500 m

Illuminance Quotient (according to LG7): Walls / Working Plane: 0.487, Ceiling / Working Plane: 0.213.
Proportion of points with less than 400 lx (for IEQ-7): 100.00%.

Luminaire Parts List

No.	Pieces	Designation (Correction Factor)	Φ (Luminaire) [lm]	Φ (Lamps) [lm]	P [W]
1	18	VYRTYCH a.s. CORSO-LED-13-840-350, 13W Interiérové - přisazené nebo nástěnné, zdroj LED (Type 1)* (1.000)	1130	1130	23.0
*Modified Technical Specifications			Total: 20346	Total: 20340	414.0

Specific connected load: $2.48 \text{ W/m}^2 = 2.66 \text{ W/m}^2/100 \text{ lx}$ (Ground area: 167.11 m^2)

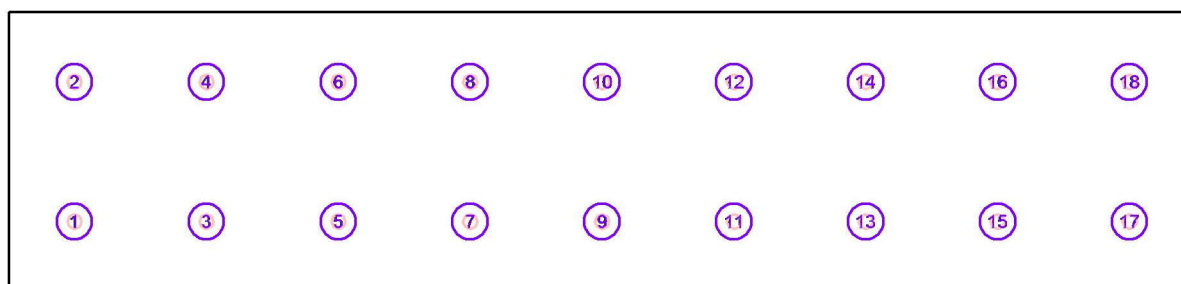


Operator
Telephone
Fax
e-Mail

Chodba - Átrium / Luminaires (coordinates list)

VYRTYCH a.s. CORSO-LED-13-840-350, 13W Interiérové - přisazené nebo nástěnné, zdroj LED (Type 1)

1130 lm, 23.0 W, 1 x 1 x User defined (Correction Factor 1.000).



No.	Position [m]			Rotation [°]		
	X	Y	Z	X	Y	Z
1	1.480	1.560	3.000	0.0	0.0	0.0
2	1.480	4.690	3.000	0.0	0.0	0.0
3	4.450	1.560	3.000	0.0	0.0	0.0
4	4.450	4.690	3.000	0.0	0.0	0.0
5	7.420	1.560	3.000	0.0	0.0	0.0
6	7.420	4.690	3.000	0.0	0.0	0.0
7	10.390	1.560	3.000	0.0	0.0	0.0
8	10.390	4.690	3.000	0.0	0.0	0.0
9	13.360	1.560	3.000	0.0	0.0	0.0
10	13.360	4.690	3.000	0.0	0.0	0.0
11	16.330	1.560	3.000	0.0	0.0	0.0
12	16.330	4.690	3.000	0.0	0.0	0.0
13	19.300	1.560	3.000	0.0	0.0	0.0
14	19.300	4.690	3.000	0.0	0.0	0.0
15	22.270	1.560	3.000	0.0	0.0	0.0
16	22.270	4.690	3.000	0.0	0.0	0.0
17	25.240	1.560	3.000	0.0	0.0	0.0
18	25.240	4.690	3.000	0.0	0.0	0.0

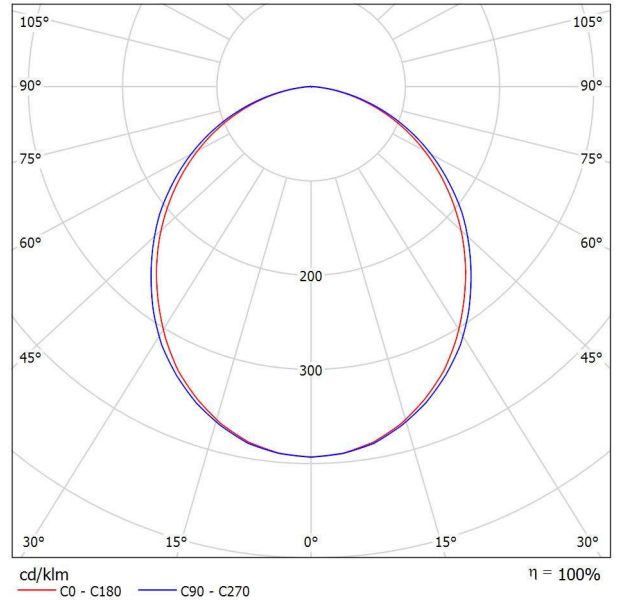


Operator
Telephone
Fax
e-Mail

VYRTYCH a.s. VIF-03-2015-G GRIFON-LED-6280-4K / Luminaire Data Sheet

Luminous emittance 1:

See our luminaire catalog for an image of the luminaire.



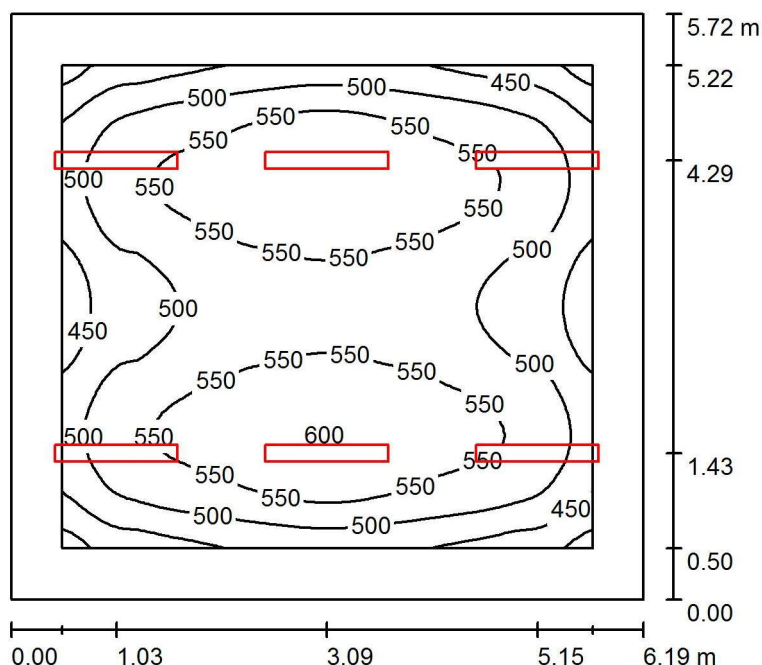
Luminaire classification according to CIE: 100
CIE flux code: 50 81 96 100 100

Luminous emittance 1:

Glare Evaluation According to UGR											
ρ Ceiling	70	70	50	50	30	70	70	50	50	30	
ρ Walls	50	30	50	30	30	50	30	50	30	30	
ρ Floor	20	20	20	20	20	20	20	20	20	20	
Room Size X Y	Viewing direction at right angles to lamp axis					Viewing direction parallel to lamp axis					
2H	2H	19.1	20.4	19.4	20.7	20.9	19.5	20.7	19.7	21.0	21.2
	3H	20.8	21.9	21.1	22.2	22.5	21.1	22.3	21.5	22.6	22.8
	4H	21.3	22.4	21.7	22.7	23.0	21.7	22.8	22.1	23.1	23.4
	6H	21.7	22.7	22.1	23.0	23.3	22.1	23.1	22.4	23.4	23.7
	8H	21.8	22.8	22.2	23.1	23.4	22.2	23.2	22.5	23.5	23.8
4H	2H	19.7	20.8	20.1	21.1	21.4	20.0	21.1	20.3	21.3	21.6
	3H	21.6	22.5	21.9	22.8	23.2	21.9	22.8	22.2	23.1	23.4
	4H	22.3	23.1	22.7	23.4	23.8	22.6	23.4	23.0	23.8	24.1
	6H	22.7	23.4	23.1	23.8	24.2	23.1	23.8	23.5	24.2	24.6
	8H	22.9	23.5	23.3	23.9	24.3	23.2	23.9	23.6	24.3	24.7
8H	4H	22.5	23.2	23.0	23.6	24.0	22.8	23.5	23.2	23.9	24.3
	6H	23.1	23.6	23.6	24.1	24.5	23.4	23.9	23.9	24.4	24.8
	8H	23.3	23.8	23.8	24.2	24.7	23.6	24.1	24.1	24.5	25.0
	12H	23.4	23.8	23.9	24.3	24.8	23.7	24.1	24.2	24.6	25.1
	12H	4H	22.5	23.1	23.0	23.6	24.0	22.8	23.4	23.3	23.8
6H		23.2	23.6	23.6	24.1	24.6	23.5	23.9	23.9	24.4	24.8
8H		23.4	23.8	23.9	24.2	24.7	23.7	24.1	24.2	24.5	25.0
Variation of the observer position for the luminaire distances S											
S = 1.0H	+0.1 / -0.1					+0.1 / -0.1					
S = 1.5H	+0.2 / -0.4					+0.2 / -0.4					
S = 2.0H	+0.5 / -0.8					+0.5 / -0.7					
Standard table	BK05					BK05					
Correction Summand	0.7					1.0					
Corrected Glare Indices referring to 4559lm Total Luminous Flux											

Operator
Telephone
Fax
e-Mail

Zborovňa / Summary



Height of Room: 3.000 m, Mounting Height: 3.000 m, Maintenance factor: 0.80

Values in Lux, Scale 1:74

Surface	ρ [%]	E_{av} [lx]	E_{min} [lx]	E_{max} [lx]	u_0
Workplane	/	522	378	603	0.725
Floor	20	410	255	498	0.624
Ceiling	70	108	75	129	0.700
Walls (4)	50	255	95	551	/

Workplane:

Height: 0.750 m
Grid: 64 x 64 Points
Boundary Zone: 0.500 m

UGR

Left Wall 22
Lower Wall 22
(CIE, SHR = 1.00.)

Lengthways-

22

Across

23
22

to luminaire axis

Illuminance Quotient (according to LG7): Walls / Working Plane: 0.512, Ceiling / Working Plane: 0.207.
Proportion of points with less than 400 lx (for IEQ-7): 0.51%.

Luminaire Parts List

No.	Pieces	Designation (Correction Factor)	Φ (Luminaire) [lm]	Φ (Lamps) [lm]	P [W]
1	6	VYRTYCH a.s. VIF-03-2015-G GRIFON-LED-6280-4K (1.000)	4561	4559	46.0
			Total: 27367	Total: 27354	276.0

Specific connected load: $7.80 \text{ W/m}^2 = 1.49 \text{ W/m}^2/100 \text{ lx}$ (Ground area: 35.41 m^2)

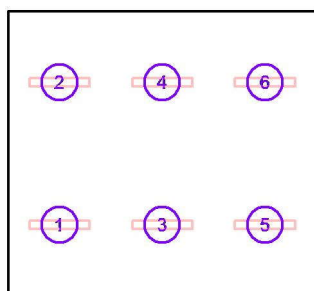


Operator
Telephone
Fax
e-Mail

Zborovňa / Luminaires (coordinates list)

VYRTYCH a.s. VIF-03-2015-G GRIFON-LED-6280-4K

4561 lm, 46.0 W, 1 x 4 x LED (Correction Factor 1.000).



No.	Position [m]			Rotation [°]		
	X	Y	Z	X	Y	Z
1	1.030	1.430	3.000	0.0	0.0	90.0
2	1.030	4.290	3.000	0.0	0.0	90.0
3	3.090	1.430	3.000	0.0	0.0	90.0
4	3.090	4.290	3.000	0.0	0.0	90.0
5	5.150	1.430	3.000	0.0	0.0	90.0
6	5.150	4.290	3.000	0.0	0.0	90.0